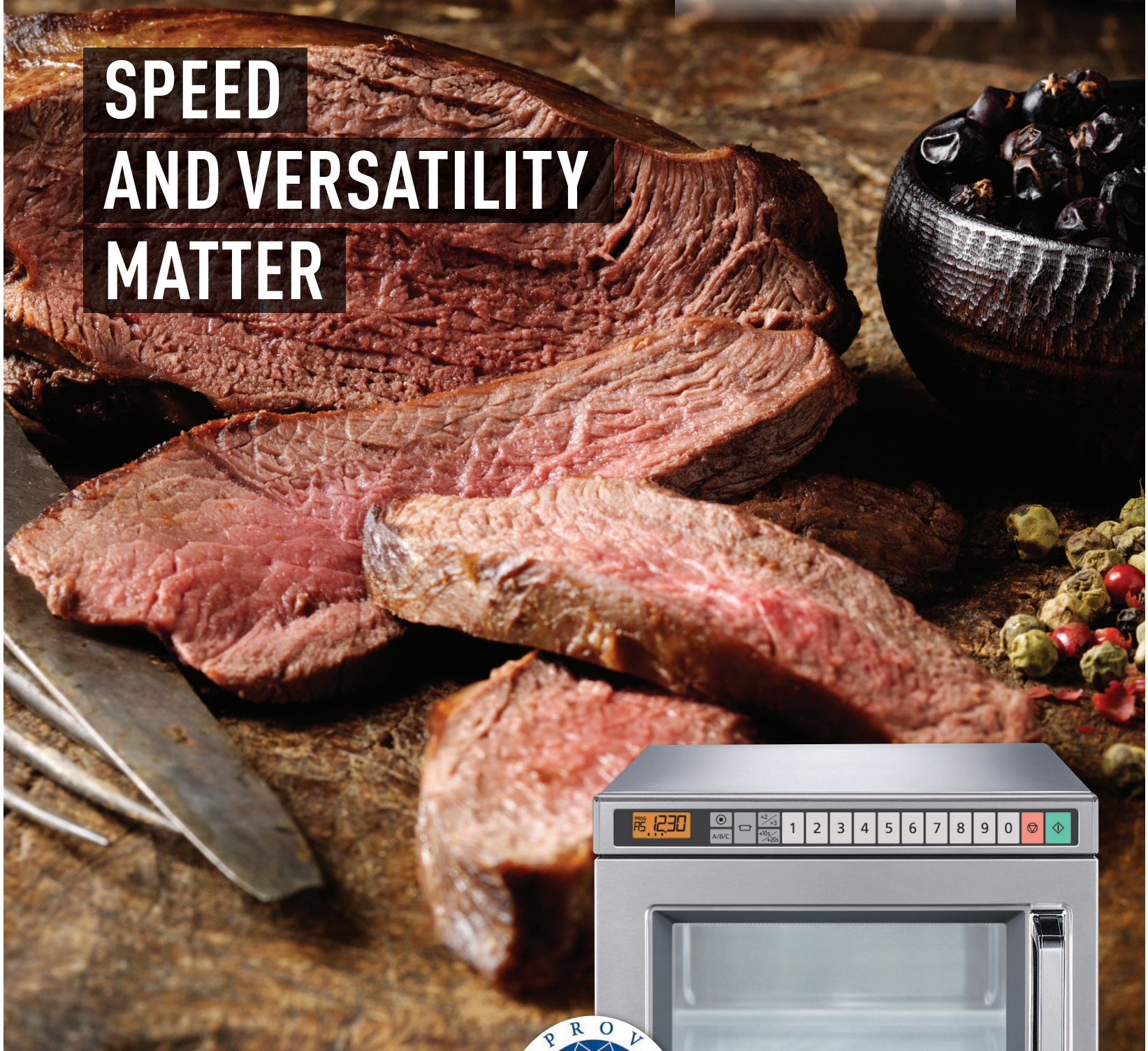


**Panasonic**

**SPEED  
AND VERSATILITY  
MATTER**



**NE-1843 MANUAL  
NE-1853 TOUCH**

[www.panasonic.co.uk](http://www.panasonic.co.uk) Sales Office: 01344 476516

For fast single portion  
throughput in busy establishments,  
vending, fast food sites and public  
house kitchens.

## NE-1843 / NE-1853 HEAVY DUTY COMPACT

- NE-1843 and NE-1853 (1800W)
- Programmable touch pads, 15 power levels (NE-1853)
- Dial control, 3 power levels (NE-1843)
- Stainless steel body and cavity
- Easy to clean interior with removable ceiling plate
- Dual emission top and bottom energy feed ensures even heating
- Clear LCD display of power levels, time and self diagnostic codes
- Removable air filter for easy cleaning
- Two ovens can be securely stacked one on top of another
- LED Interior light can be programmed to flash at the end of the cooking cycle
- 10/20 second boost button. Just a single press provides an additional 10/20 seconds if needed
- Self diagnostic
- 30 programs to include 2 and 3 stage heating (NE-1853)
- Programmed option for x2 and x3 quantity heating (NE-1853)
- Program lock to allow one touch operation (NE-1853)
- Repeat function (for manual heating only) (NE-1853)
- Clean air filter reminder (NE-1853)
- Cycle counter – records the number of operations (NE-1853)
- Beep tone option (NE-1853) can be silenced
- Pull open door with wide easy view window

### PLACEMENT OF YOUR OVEN

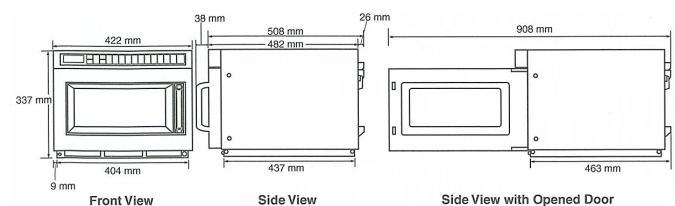
- Oven must be placed on a flat, stable surface. For proper operation, the oven must have sufficient air flow.
- A gap of at least 5cm (2") must be available at the right and left hand sides and back wall of the oven.
- A minimum space of 20cm (8") must be left above the oven and the 2 exhaust vents at the rear.
- Do not place the oven on a shelf directly above or beside a gas or electric hob or cooker. This may cause damage to the oven.
- It is dangerous to position this oven on a shelf which is so high that food and accessories cannot be safely removed by the user.

### POWER SUPPLY

- NE-1843 and NE-1853 13 amp

TECHNICAL SPECIFICATIONS		
	NE-1843	NE-1853
Power Source	50Hz, Single Phase 230 - 240 V	50Hz, Single Phase 230 - 240 V
Required Power	12.3 A 2830 W	12.3 A 2830 W
Output*	High	1800 W*
	Medium High	P9: 90% P8: 80% P7: 70% P6: 60%
	Medium	P5: 50% P4: 40%
	Low	P3: 30% P2: 25%
	Defrost	P1: 340 W
	Off	P0: 0%
	Heat from top down	PU1: 50% PU2: 25%
	Heat from bottom	PL1: 50% PL2: 25%
Frequency	2450 MHz	2450 MHz
Outside Dimensions (WxDxH)	422mm x 508mm x 337mm	422mm x 508mm x 337mm
Cavity Dimensions (WxDxH)	330mm x 310mm x 175mm	330mm x 310mm x 175mm
Net weight	30.0 kg	30.0 kg
Timer	—	30 minutes (digital) / 10 touch pads. Maximum programmable time for single stage heating P1 and P0 = 30 minutes P10-P2, PU1-PL2 = 15 minutes

\*IEC Test Procedure. Specifications subject to change without notice.



### FOR FURTHER INFORMATION

Sales Office Tel: 01344 617 617 Fax: 01344 853217 Email: commercial\_ovens@eu.panasonic.com Service Tel: 01933 665313

www.panasonic.co.uk